

# GBC ABA COVID-19 SAFETY PROCEDURES

GBC aba is actively monitoring the latest developments with COVID-19 and is following all appropriate recommendations from health authorities to ensure a safe workplace.

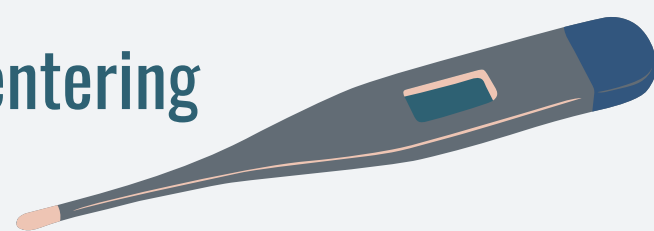
## Screening questions



To help prevent the spread of COVID-19 and reduce the potential risk of exposure, we will be requiring anyone entering the building to complete a set of screening questions.

## Check your temperature.

Temperatures will be checked when entering the building along with screening questions.



## Watch for other symptoms.

Aside from fever, Covid-19 symptoms include cough, difficulty breathing, and fatigue.



## Practice social distancing.

6 feet of distance will be maintained as much as possible when in the center and during in-home appointments. GBC staff will monitor and reinforce the requirement.



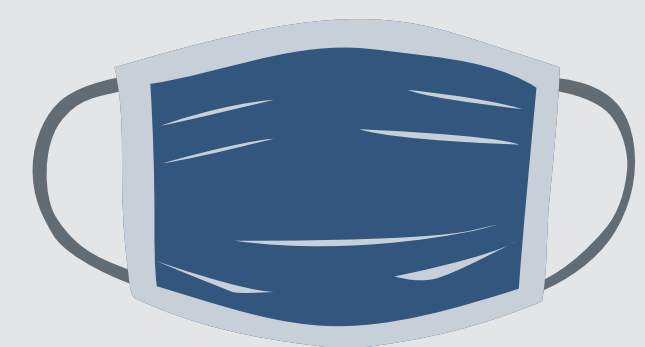
## Wash your hands.

Everyone must wash their hands at the beginning of an appointment, every 30 minutes, and at the end. GBC staff will also teach clients how to do this.



\*When washing hands, use soap and water and wash your hands for at least 20 seconds.

## Wearing face masks



All GBC staff are required to wear the provided reusable mask when face-to-face with GBC clients, client families, or staff. Each staff is given a supply of reusable face masks and are responsible for maintaining them in accordance with GBC's Personal Protective Equipment Policy

## Travel procedures



GBC recognizes that some staff and clients may need to continue to travel during this pandemic. However, we also have the responsibility to maintain safe workspaces for our employees and clients during this time. If traveling, staff are required to submit time-off and indicate where they are traveling.

